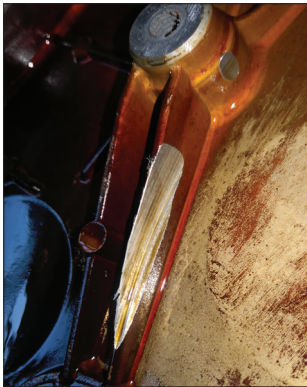


Hyundai i10 - Worn out timing chain

There is a slight misconception amongst the general public when it comes to camshaft drive chains and belts. I have known customers to buy a certain make or model over another, due to the fact that one vehicle may have a camshaft driven by a belt, while some owners prefer a chain driving the camshaft. The fact remains that a chain driven camshaft can and do still give problems.

This 2013 Hyundai i10 Active 1248cc had under 60,000 miles on the clock. From the look of the service book, it had been regularly



A badly worn timing chain

maintained at yearly intervals.

This had not prevented the knocking/slapping noise the owner was now concerned at hearing from the engine. It was soon diagnosed as the timing chain slapping against the cover and once stripped down this was confirmed.

A stretched timing chain does at least give a little warning, but it's life cannot always be guaranteed to be longer than that of a timing belt.

The job time on this one was just under four hours, plus with the recommended oil and filter change at the same time, the job was above the average price that a timing belt would have been to replace.