



Ford Scorpio, from model year 03.1995 All petrol engine models

Fuel gauge defective

If there are complaints about the above fault, the cause could be a broken instrument cluster printed circuit board. The fault manifests itself by the needle deflecting so far that it touches the plastic housing.

The following test steps should however be carried out before exchanging the instrument cluster:

- Switch on the position lights for at least 30 minutes, so that the printed circuit board warms up.
- Activate the instrument cluster self-test as follows.
 - o Switch on the ignition.
 - o Press and hold the trip meter reset button for at least 6 seconds.
 - o When all symbols are visible in the displays for the tachometer and speedometer, the self-test is activated (see Fig. 1).
- Switch the ignition off and on again and watch the fuel gauge.
 - o If the needle deflects so far that it touches the housing (see Fig. 2), the printed circuit board is broken and the instrument cluster must be replaced.
 - o If the needle moves very quickly to “full”, then to “empty” and then back to the current fuel level, the printed circuit board is OK.

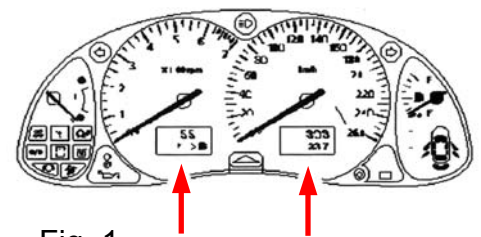


Fig. 1

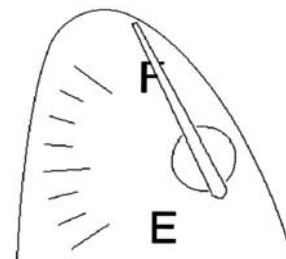


Fig. 2