



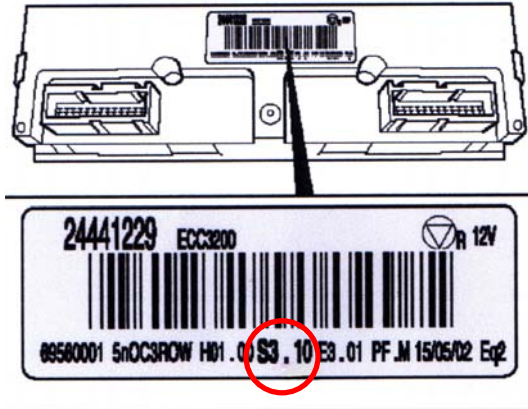
## **Opel Vectra C Model year 2002 to 2004**

### **Engine doesn't start**

If there are complaints about the above-mentioned fault, a flat battery could be the cause. This is the result of quiescent current being too high. In the case of air conditioning control units with software versions S3.10 and S3.12 (see Fig.) current consumption was approx. 75 mA and can thus lead to the fault described.

In this case the control unit has to be replaced.

In vehicles where this replacement has taken place there is a white spot on the fuse box cover.



Bulletin