

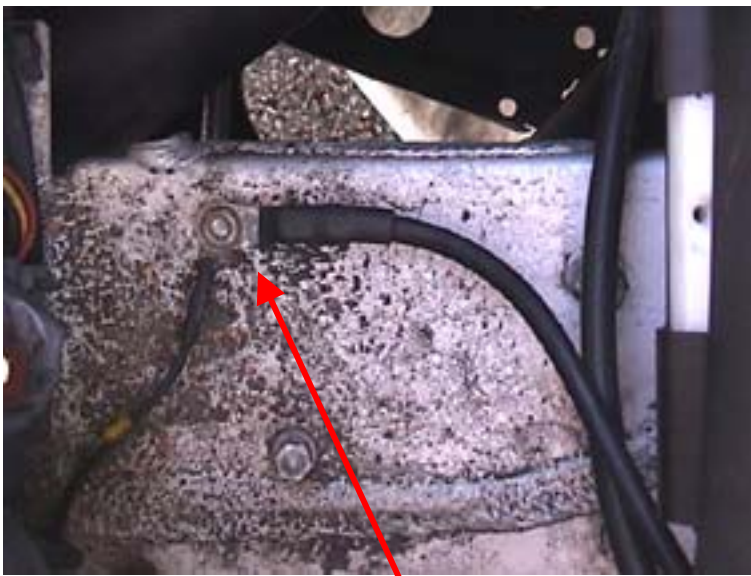


## **Saab 9\_5** **Vehicles from chassis no.:** **W3087635 to X3005081**

### **Poor contact at ground point G30.**

If there are complaints with these vehicles that faults occur with the following components/systems: left-hand lighting function, left-hand headlamp wiper, headlamp relay, alarm siren, vacuum pump, pressure sensor, cooling fan motor and relay, washer pump and filling level sensor, one possible cause is a poor contact at the ground point G 30. This ground point is in the engine compartment in front of the left-hand wheel housing.

To eliminate the fault, the ground connection must be checked. If necessary, corrosion must be removed and perfect contact re-established.



Ground point G 30